

DEPARTMENT OF THE ARMY TECHNICAL MANUAL

GENERAL SUPPORT AND DEPOT MAINTENANCE REPAIR  
 PARTS AND SPECIAL TOOLS LIST FOR  
 PURGE AND FILL UNIT, GYRO STABILIZED PLATFORM MX-8474/ASN-86

Headquarters, Department of the Army, Washington, D. C.

17 August 1971

TABLE OF CONTENTS

	Paragraph	Page
SECTION I. INTRODUCTION		
Scope .....	1-1	1-1
General .....	1-2	1-1
Explanation of Columns .....	1-3	1-1
Special Information .....	1-4	1-3
How to Locate Repair Parts .....	1-5	1-3
Abbreviations (Not Applicable).....	1-6	1-4
Federal Supply Codes for Manufacturers .....	1-7	1-4
Recommendations for Maintenance Publication Improvements.....	1-8	1-6
II. REPAIR PARTS FOR GENERAL SUPPORT AND DEPOT MAINTENANCE .....		2-1
III. SPECIAL TOOLS, TEST, AND SUPPORT EQUIPMENT FOR GENERAL SUPPORT AND DEPOT MAINTENANCE .....		3-1
IV. INDICES		
Federal Stock Number Cross-Reference to Index Number .....		4-1
Reference Number Cross-Reference to Figure and Item Number .....		4-2
Reference Designation Cross-Reference to Index Number .....		4-3
Federal Stock Number Cross-Reference to Figure and Item Number .....		4-4
Figure and Item Number Cross-Reference to Index Number .....		4-5

LIST OF ILLUSTRATIONS

Number	Title	Page
1	Purge and Fill Unit, Gyro Stabilized Platform MX-8474/ASN-86 .....	3-2
2	Special Tools, Test, and Support Equipment .....	3-3

i/(ii blank)

**Section I. INTRODUCTION**

**1-1. Scope.**

This manual lists repair parts, special tools, and test and support equipment required for the performance of general support and depot maintenance of the Purge and Fill Unit, Gyro Stabilized Platform MX-8474/ASN-86. Direct support maintenance is not applicable to this manual, although tabular headings indicate same for consistency with associated manuals.

**1-2. General.**

This Repair Parts and Special Tools list is divided into the following sections:

a. Repair Parts Section II. A list of repair parts authorized for the performance of maintenance at the general support and depot level in the same sequence as the Selection Work Sheet. Figure and item numbers are not in sequential order.

b. Special Tools, Test, and Support Equipment Section III. A list of special tools, test, and support equipment authorized for the performance of maintenance at the general support, and depot level.

c. Indices Section IV. Conversion of numbers and indices is explained as follows:

(1) Index Federal Stock Number to Index Number. A list of Federal stock numbers, in ascending numerical sequence, cross-referenced to the Repair Parts list index number.

(2) Index Reference Number to Figure and Item Number. A list of reference numbers (part numbers and manufacturers codes), in ascending alphanumeric sequence, cross-referenced to figure and item number.

(3) Index -Reference Designation to Index Number. A list of Reference Designations (RD), in ascending alphanumeric sequence, cross-referenced to the Repair Parts list index number.

(4) Index Federal Stock Number to Figure and Item Number. A list of Federal stock numbers, in ascending numerical sequence, cross-referenced to the illustration figure number and item number.

(5) Index Figure and Item Number to Index Number. A list of figure and item numbers, each in ascending numerical sequence, cross-referenced to the Repair Parts list index numbers.

**1-3. Explanation of Columns.**

The following provides an explanation of columns in the tabular lists in Sections II and III.

a. Source, Maintenance, and Recoverability (SMR) Codes, Column 1.

(1) Source code, indicates the selection status and source for the listed item. Source codes are:

Code	Explanation
G	Applies to major assemblies that are procured with Procurement of Electronics and Missiles, Army (PEMA) funds for initial issue only to be used as exchange assemblies at Direct Support Unit (DSU) and General Support Unit (GSU) level. These assemblies will not be stocked above DSU and GSU level or returned to depot level
P	Applies to repair parts which are stocked in or supplied from the General Support Activity/Direct Support Activity (GSA/DSA), or Army supply system, and authorized for use at indicated maintenance categories
X2	Applies to repair parts which are not stocked. The indicated maintenance category requiring such repair parts will attempt to obtain through cannibalization; if not obtainable through cannibalization, such repair parts will be requisitioned with supporting justification through normal supply channels

(2) Maintenance code, indicates the lowest category of maintenance authorized to install the listed item. The maintenance codes are:

Code	Explanation
O	Organizational maintenance
H	General support maintenance

(3) Recoverability code, indicates whether unserviceable items should be returned for recovery or salvage. Items not coded are expendable. Recoverability codes are:

Code	Explanation
R	Applies to repair parts and assemblies which are economically repairable at DSU and GSU activities and normally are furnished by supply on an exchange basis

b. The second line of column 1 is a cross-reference to the index number of the repair part as it appears in the Selection Work Sheet (SWS). The index number is explained as follows:

A001	Denotes original line entry in the SWS
A001M	"M" denotes a modified or changed line item in the SWS
A001A	"A" and other subsequent letters denotes additional line items in the SWS

c. Federal Stock Number, Column 2. This column indicates the Federal stock number assigned to the item and will be used for requisitioning purposes.

d. Description, Column 3. This column indicates the Federal item name of the item required. A part number or other reference number is followed by the applicable five-digit Federal supply code for manufacturers in parentheses.

e. Unit of Measure (U/M), Column 4. A two-character alphabetic abbreviation indicating the amount or quantity of the item upon which the allowances are based; e. g., EA (each).

f. Quantity Incorporated in Unit, Column 5. This column indicates the quantity of the item used in any one assembly. An "AR" appearing in this column in lieu of a quantity indicates that a definite quantity cannot be indicated; e.g., shims, spacers, etc.

g. 30-Day GS Maintenance Allowance, Column 7. Allowances in GS column are for GS maintenance only.

(1) The allowance columns are divided into three subcolumns. Indicated in each subcolumn, opposite the first appearance of each item, is the total quantity of items authorized for the number of equipments supported. Subsequent appearances of the same item will have the letters "REF" in the applicable allowance columns. Items authorized for use as required but not for initial stockage are identified with an asterisk in the allowance column.

(2) The quantitative allowances for GS level of maintenance will represent initial stockage for a 30-day period for the number of equipments supported.

(3) Determination of the total quantity of parts required for maintenance of more than 100 of these equipments can be accomplished by converting the equipment quantity to a decimal factor by placing a decimal point before the next to last digit of the number to indicate hundredths, and multiplying the decimal factor by the parts quantity authorized in the 51-100 allowance column. Example, authorized allowance for 51-100 equipments is 40; for 150 equipments multiply 40 by 1.50 or 60 parts required.

h. 1-Year Allowance Per 100 Equipments Contingency Planning Purposes, Column 8. This column indicates opposite the first appearance of each item the total quantity required for distribution and contingency planning purposes. The range of items indicates total quantities of all authorized items required to provide for adequate support of 100 equipments for 1 year.

i. Depot Maintenance Allowance Per 100 Equipments, Column 9. This column indicates opposite the first appearance of each item, the total quantity authorized for depot maintenance of 100 equipments. Subsequent appearances of the same item will have the letters "REF" in the allowance column.

j. Illustration, Column 10. This column indicates the figure number of the illustration in which the item is shown, and the number used to reference the item in the illustration.

k. Reference Designation, Column 11. This column indicates the reference designation symbol of each item in the equipment.

**1-4. Special Information.**

- a. Repair parts mortality has been based on 100 equipments operating 65 hours a month for 1 year.
- b. The basis of issue for authorized special tools, test and support equipment is the number of end items of equipment supported and the number of maintenance personnel allocated to perform the required maintenance operations as follows: Two sets of Special Tools and Test Equipment supporting twenty-three AN/ASN-86 Inertial Navigation Sets.
- c. The following publications pertain to Purge and Fill Unit, Gyro Stabilized Platform MX-8474/ASN-86 and its components.

TM 11-6625-2444-12	Operator's and Organizational Maintenance Manual for Purge and Fill Unit, Gyro Stabilized Platform MX-8474/ASN-86
TM 11-6625-2444-15	Operator, Organizational, Direct Support, General Support, and Depot Maintenance for Purge and Fill Unit, Gyro Stabilized Platform MX-8474/ASN-86
TM 11-6625-2444-45	General Support and Depot Maintenance Manual for Purge and Fill Unit, Gyro Stabilized Platform MX-8474/ASN-86
TM 11-6625-2444-20P	Organizational Maintenance Repair Parts and Special Tools List for Purge and Fill Unit, Gyro Stabilized Platform MX-8474/ASN-86

d. Items phantomed on illustrations are not available as a separate item of supply. When need for such hardware exists, the repair part which is attached will be requisitioned.

**1-5. How to Locate Repair Parts.**

- a. When the Federal stock number or reference number is unknown:
  - (1) First. Determine the assembly within which the repair part belongs.
  - (2) Second. Using list of illustrations, find the illustration covering the assembly to which the repair part belongs.
  - (3) Third. Identify the repair part on the illustration and note the figure and item number of the repair part.
  - (4) Fourth. Using the Figure and Item Number Index, locate the sequence index number of the repair part.
  - (5) Fifth. Refer to the sequence index number in the Repair Parts list for the Federal stock number or reference number.
- b. When the Federal stock number or reference number is known:
  - (1) First. Using either of the indices of Federal Stock Numbers, find the Federal stock number. These indices are in ascending numerical sequence by Federal stock number, cross-referenced to either the Repair Parts list index number, or to the illustration figure and item number.
  - (2) Second. Using the Index of Reference Numbers, find the applicable number. This index is in ascending alphanumeric sequence by reference number, cross-referenced to the Repair Parts list index number.
  - (3) Third. Using the Repair Parts list, find the assembly of the repair part and the illustration figure and item number, or the index number, as referenced in the indices of Federal Stock Numbers or Reference Numbers.

c. When the RD is known:

(1) First. Using the Reference Designation Index, find the RD. This index is in ascending alphanumeric sequence, cross-referenced to the index number of the Repair Parts list. The next higher assembly of any component may be determined by using the RD Index. Identify the RD of the part in question and, by following the upward progression of this index, the sequence number of the next higher assembly part number may be identified. The RD is compiled as follows:

<u>1</u>	<u>A1</u>	<u>A1</u>	<u>MP1</u>
Unit No.	Assembly Letter and No.	Subassembly Letter And	Component Letter No. and No.

(2) Second. Using the Repair Parts list, find the assembly of the repair part and the illustration figure and item number.

d. When the Figure and Item Number are known:

(1) First. Identify the repair part on the applicable figure.

(2) Second. Cross-reference to the individual indices for information required.

**1-6. Abbreviations. Not applicable.**

**1-7. Federal Supply Codes for Manufacturers.**

Code	Manufacturer
06004	Bassick Division Stewart-Warner Corp. 960 Atlantic St. Bridgeport, Conn. 06604
06481	Litton Systems, Inc. Guidance and Control Systems Div. 5500 Canoga Ave. Woodland Hills, Calif. 91364
08588	Bridgeport Brass Co. 30 Grand St. Bridgeport, Conn. 06604
2012	Minarik Electric Co. 228 E. 3rd St. Los Angeles, Calif. 90013
14726	Hollingsworth Solderless Terminal Co. Nutt and French Creek Rd. Phoenixville, Pa. 19460
16166	Western Enterprises, Inc. 27360 W. Oviatt Road Bay Village, Ohio 44140
17537	Los Angeles Miniature Products, Inc. 17000 S. Western Gardena, Calif. 90247
18702	Ducommun Metals and Supply Co. 4890 S. Alameda Los Angeles, Calif. 90058
19793	Cadillac Plastic-Chemical Co. 1761 Edgar Road Linden, NJ 07036

28968	Hoke, Inc. 1 Tenakill Park Creskill, N. J. 07626
39481	Mead Fluid Dynamics Div. of Stanray Corp. 4114 N.Knox Ave. Chicago, Ill. 60641
45681	Parker-Hannifin Corp. 17325 Euclid Ave. Cleveland, Ohio 44112
53477	Scovill Mfg. Co. Fluid Power Div. U.S. Route 1 Wake Forest, NC 27587
61349	Ametek/U. S. Gauge 909 Clymer Ave. Sellersville, Pa. 18960
70292	Sherwood Selpac Corp. 120 Church St. Lockport, NY 14094
70903	Belden Corp. 415 S. Kilpatrick Chicago, Ill. 60644
71286	Camloc Div. Rex Chainbelt 22 Spring Valley Road Paramus, N. J. 07652
71785	Cinch Mfg. and Howard B. Jones Div. 1026 S. Homan Ave. Chicago, Ill. 60624
80063	Army Electronics Command Procurement and Production Directorate Fort Monmouth, N. J. 07703
80205	National Aerospace Standards Committee Aerospace Industries Association of America, Inc. 1725 De Sales N. W. Washington, D. C.
81349	Military Specifications Promulgated by Standardization Div. Directorate of Logistic Services, DSA
81978	Skinner Electric Valve Div. of Skinner Precision Industries, Inc. New Britain, Conn.
83330	Smith, Herman H., Inc. 812 Snediker Ave. Brooklyn, NY 11207
88044	Aeronautical Standards Group Dept. of Navy and Air Force Silver Springs, Md.
91929	Honeywell, Inc. Microswitch Div. Freeport, Ill.

93329	Victor Equipment Co. 3821 S. Santa Fe Los Angeles, Calif. 90058
96906	Military Standards Promulgated by Standardization Div. Directorate of Logistic Services, DSA
97620	Kennedy Name Plate Co. 4509 Pacific Blvd. Los Angeles, Calif. 90058
99862	Carr Lane Mfg. Co. 4200 Krause Court St. Louis, Mo. 63119

**1-8. Recommendations for Maintenance Publication Improvements.**

Report of errors, omissions, and recommendations for improving this publication by the individual user is encouraged. Reports should be submitted on DA Form 2028 (Recommended Changes to DA Publications) and forwarded direct to Commanding General, U.S. Army Electronics Command, Attn: AMSEL-ME-NMP-AS, Fort Monmouth, New Jersey 07703.

SECTION II. REPAIR PARTS FOR DIRECT SUPPORT, GENERAL SUPPORT, AND DEPOT MAINTENANCE

(1) SMR CODE	(2) FEDERAL STOCK NUMBER	(3) DESCRIPTION	(4) UNIT OF MEAS.	(5) QTY INC IN UNIT	(6) 30-DAY DS MAINT ALLOWANCE			(7) 30-DAY GS MAINT ALLOWANCE			(8) 1 YR ALW PER 100 EQUIP	(9) DEPOT MAINT ALW PER 100 EQUIP	(10) ILLUSTR- ATIONS FIGURE & ITEM NO.	(11) REFERENCE DESIGNATION
					(a)	(b)	(c)	(a)	(b)	(c)	CNTGCV	EQUIP		
					1-20	21-50	51-100	1-20	21-50	51-100				
G O R A001	6605-522-3739	PURGE AND FILL UNIT, GYRD PLATFORM MX-8474/ASN-86 310086 (06481)	EA	1								1-1	1	
X2 H A002	5975	BAND, MARKER, CABLE 832IRIDITE (97620)	EA	1								1-47	1MP1	
A002A		B0SS, FLUID CONNECTION MS33649-4 (96906)	EA	1								1-70	1MP40	
X2 H A003	6605	BRACE 310086-88 (06481)	EA	1								1-106	1MP2	
X2 H A004M	5310-894-3638	NUT, EXTENDED WASHER, HEXAGON NAS1291C3M (80205)	EA	8								1-107	1MP2H8	
A004A	5305	SCREW, MACHINE MS51958-63 (96906)	EA	4								1-109	1MP2H4	
X2 H A005M	5305-059-3662	SCREW, MACHINE MS51958-66 (96906)	EA	4								1-110	1MP2H4	
A005A	5310	WASHER, FLAT AN960C10L (88044)	EA	4								1-108	1MP2H4	
P H A006M	5995	CORD, ELECTRICAL 17419S J (70903)	EA	1				*	*	*	4	1	1-48	1W1
P H A007	5340	CASTER 261 (06004)	EA	4				*	*	2	10	4	1-116	1MP3
X2 H A008	5310-989-0908	NUT, PLAIN, HEXAGON MS35691-3 (96906)	EA	16								1-117	1MP3H16	
X2 H A009	5305-071-1316	SCREW, MACHINE MS51957-80 (96906)	EA	16								1-119	1MP3H16	
X2 H A010	5310-933-8121	WASHER, LOCK MS35338-139 (96906)	EA	16								1-118	1MP3H16	
A011A	5340	CLAMP, HOSE 14-3-16-3PLY7-16 (18702)	EA	2								1-50	1MP4	
P H A012M	4730-720-2007	CONNECTOR, PIPE 4-4FBUSS (45681)	EA	1				*	*	*	5	2	1-65	1MP6
P H A013	4730-132-9964	CONNECTOR, PIPE 310086-85 (06481)	EA	1				*	*	*	4	1	1-69	1MP5
X2 H A014	6605	CONSOLE 310086-83 (06481)	EA	1								1-120	1MP7	
P H A015	4730-768-0613	COUPLING, PUMP 8385 (53477)	EA	1				*	*	*	4	1	1-52	1MP8
A016A	8120	CYLINDER, NITROGEN 6BM55 (93329)	EA	2								1-87	1MP9	
A016B	4730	ELBOW 4-4CDSS (45681)	EA	1								1-55	1MP41	
P H A017	4730-892-4587	ELBOW 4-4CBUSS (45681)	EA	7				*	2	2	15	7	1-58	1MP10
P H A018M	4730-965-1232	ELBOW 4-4DBUSS (45681)	EA	4				*	2	2	12	3	1-57	1MP11
P H A019	2640-672-8670	EXTENSION 5328 (53477)	EA	1				*	*	*	4	1	1-51	1MP12
P H A020	4730-200-0531	FITTING, HOSE 6363 (53477)	EA	1				*	*	*	4	1	1-54	1MP13
A022A	6685	GAGE, PRESSURE /0-3000PSI/ 1943-4-1-2DIA (61349)	EA	1								1-13	1G1	



SECTION II. REPAIR PARTS FOR DIRECT SUPPORT, GENERAL SUPPORT, AND DEPOT MAINTENANCE  
(CONTINUED)

(1) SMR CODE	(2) FEDERAL STOCK NUMBER	(3) DESCRIPTION	(4) UNIT OF MEAS.	(5) QTY INC IN UNIT	(6) 30-DAY DS MAINT ALLOWANCE			(7) 30-DAY GS MAINT ALLOWANCE			(8) 1 YR ALW PER 100 EQUIP	(9) DEPOT MAINT ALW PER 100 EQUIP	(10) ILLUSTR- ATIONS FIGURE & ITEM NO.	(11) REFERENCE DESIGNATION
					(a) 1-20	(b) 21-50	(c) 51-100	(a) 1-20	(b) 21-50	(c) 51-100	CNTGCV	EQUIP		
A023A	5305	SCREW, MACHINE AN26C1032-8 (88044)	EA	3								1 - 14	1G1H3	
P H R A024M	6685	GAGE, PRESSURE /0-5PSI/ 714-4-1-2DIA (61349)	EA	1				*	*	*	4	1	1 - 11	1G2
A025A	6685	SCREW, MACHINE AN26C1032-8 (88044)	EA	3									1 - 12	1G2H3
X2 H A026	5325-937-2015	GROMMET 91121 (83330)	EA	1									1 - 49	1MP15
A027A	4720	HOSE 420606-4-4-4-24 (45681)	EA	1									1 - 71	1MP16
P H A028	6210-774-5948	INDICATOR, OPERATOR 2M2 (91929)	EA	4				2	2	3	33	20	1 - 34	1DSA
P H A029M	6210-774-5948	INDICATOR, OPERATOR 2M2 (91929)	EA	REF				REF	REF	REF	REF	REF	1 - 35	1DSB
P H A030M	6210-774-5948	INDICATOR, OPERATOR 2M2 (91929)	EA	REF				REF	REF	REF	REF	REF	1 - 36	1DSC
P H A031M	6210-774-5948	INDICATOR, OPERATOR 2M2 (91929)	EA	REF				REF	REF	REF	REF	REF	1 - 37	1DSD
P O A032	5355	KNOB, INSTRUMENT 2203A (83330)	EA	3				*	2	2	13	6	1 - 10	1MP17
P H A033	6605-795-1674	LAMP, INCANDESCENT 327-06 (17537)	EA	4				REF	REF	REF	REF	REF	1 - 17	1DS1
P H A034M	6605-795-1674	LAMP, INCANDESCENT 327-06 (17537)	EA	REF				REF	REF	REF	REF	REF	1 - 18	1DS2
P H A035M	6605-795-1674	LAMP, INCANDESCENT 327-06 (17537)	EA	REF				REF	REF	REF	REF	REF	1 - 23	1DS3
P H A036M	6605-795-1674	LAMP, INCANDESCENT 327-06 (17537)	EA	REF				REF	REF	REF	REF	REF	1 - 22	1DS4
P H A037	1560	MUFFLER, MIDGET M1 (39481)	EA	1				*	*	2	8	3	1 - 61	1MPLB
A039A	4730	NIPPLE 1-8FFSS (45681)	EA	1									1 - 64	1MP20
X2 H A040	6605	PAD 310086-81 (06481)	EA	1									1 - 104	1MP21
A040A	5305	SCREW, MACHINE AN26C1032-8 (88044)	EA	8									1 - 105	1MP21H8
X2 H A041	6605	PANEL 310086-79 (06481)	EA	1									1 - 38	1MP22
A042A	5305	SCREW, MACHINE AN26C1032-8 (88044)	EA	6									1 - 39	1MP22H6
A042B	5310	WASHER, FLAT AN960C10L (88044)	EA	6									1 - 43	1MP22H6
X2 H A043	6605	PANEL 310086-84 (06481)	EA	1									1 - 23	1MP23
A044A	5305	SCREW, MACHINE AN26C1032-8 (88044)	EA	8									1 - 24	1MP23H8
A044B	5310	WASHER, FLAT AN960C10L (88044)	EA	8									1 - 25	1MP23HB
A044C	9905	PLATE, IDENTIFICATION 247877-6 (06481)	EA	1									1 - 3	1MP39

SECTION II. REPAIR PARTS FOR DIRECT SUPPORT, GENERAL SUPPORT, AND DEPOT MAINTENANCE  
(CONTINUED)

(1) SMR CODE	(2) FEDERAL STOCK NUMBER	(3) DESCRIPTION	(4) QTY INC IN UNIT PACK	(5) QTY INC IN UNIT	(6) 30-DAY DS MAINT ALLOWANCE			(7) 30-DAY GS MAINT ALLOWANCE			(8) 1 YR ALW PER 100 EQUIP	(9) DEPOT MAINT ALW PER 100 EQUIP	(10) ILLUSTR- ATIONS FIGURE & ITEM NO.	(11) REFERENCE DESIGNATION
					(a) 1-20	(b) 21-50	(c) 51-100	(a) 1-20	(b) 21-50	(c) 51-100	CNTGCV	EQUIP		
A044E	5310	NUT, EXTENDED WASHER, HEXAGON NAS1291C04M (80205)	EA	4								1 - 4	1MP39H4	
A044F	5305	SCREW, MACHINE MS51957-15 (96906)	EA	4								1 - 6	1MP39H4	
A044G	5310	WASHER, FLAT NAS620C4 (80205)	EA	8								1 - 5	1MP39H8	
X2 H A045	9905	PLATE, IDENTIFICATION 664277 (06481)	EA	1								1 - 2	1MP24	
P H A048	6615	REGULATOR /LESS GAGES/ VTS4003973PM (93329)	EA	1				*	*	2	8	3	1 - 66	1MP27
A049A	5905	RESISTOR, FIXED, COMPOSITION RC42GF152J (81349)	EA	4								1 - 26	1R1	
A050A	5905	RESISTOR, FIXED, COMPOSITION RC42GF152J (81349)	EA	REF								1 - 27	1R2	
A051A	5905	RESISTOR, FIXED, COMPOSITION RC42GF152J (81349)	EA	REF								1 - 28	1R3	
A052A	5905	RESISTOR, FIXED, COMPOSITION RC42GF152J (81349)	EA	REF								1 - 29	1R4	
X2 H A053	6210-131-6480	RING, GUARD 2K3 (91929)	EA	4								1 - 15	1MP28	
X2 H A054	6210-940-8265	SCREEN, 3 PIECE 2J10 (91929)	EA	2								1 - 16	1MP29	
X2 H A055	6210-940-8264	SCREEN, 3 PIECE 2J11 (91929)	EA	1								1 - 21	1MP30	
X2 H A056	6210-916-2711	SCREEN, 3 PIECE 2J12 (91929)	EA	2								1 - 19	1MP31	
X2 H A057	5305-988-7616	SCREW, CAP, SOCKET HEAD MS16995-52 (96906)	EA	2								1 - 63	1H1	
X2 H A058	6605	STOP 310086-86 (06481)	EA	1								1 - 8	1MP32	
A059A	5305	SETSCREW MS51021-9 (96906)	EA	1								1 - 9	1MP32H1	
X2 H A060	6605	SUBASSEMBLY, FILL STATION 310086-101 (06481)	EA	1								1 - 88	1A1	
X2 H A061	6605	BASE 310086-98 (06481)	EA	1								1 - 103	1A1MP	
X2 H A062	5340-827-6389	CLIP 773 (83330)	EA	3								1 - 89	1A1MP2	
X2 H A063	5305-059-3657	SCREW, MACHINE MS51958-61 (96906)	EA	11								1 - 90	1A1MP2H3	
X2 H A064	5340-812-5393	LATCH ASSEMBLY, TOGGLE, TENSION 30L1-4 (71286)	EA	2								1 - 91	1A1MP3	
A064A	5340	LATCH ASSEMBLY, TOGGLE, TENSION 30L2-4 (71286)	EA	2								1 - 92	1A1MP10	
X2 H A065	6605	LEG 310086-99 (06481)	EA	2								1 - 101	1A1MP4	
X2 H A066	5305-938-7826	SCREW CAP, SOCKET HEAD MS24671-32 (96906)	EA	8								1 - 102	1A1MP4H8	
X2 H A067	6605	PLATE, FRONT 310086-96 (06481)	EA	1								1 - 98	1A1MP5	

SECTION II. REPAIR PARTS FOR DIRECT SUPPORT, GENERAL SUPPORT, AND DEPOT MAINTENANCE  
(CONTINUED)

(1) SMR CODE	(2) FEDERAL STOCK NUMBER	(3) DESCRIPTION	(4) QTY INC IN UNIT PACK	(5) QTY INC IN UNIT	(6) 30-DAY DS MAINT ALLOWANCE			(7) 30-DAY GS MAINT ALLOWANCE			(8) 1 YR ALW PER 100 EQUIP	(9) DEPOT MAINT ALW PER 100 EQUIP	(10) ILLUSTR- ATIONS FIGURE & ITEM NO.	(11) REFERENCE DESIGNATION
					(a)	(b)	(c)	(a)	(b)	(c)	CNTGCTY	EQUIP		
		REFERENCE NUMBER & MFR. CODE												
		USABLE ON CODE												
X2 H A068	5305-988-7794	SCREW, CAP, SOCKET HEAD MS24671-30 (96906)	EA	16									1 - 99	1A1MP5H16
X2 H A069	6605	PLATE, SIDE 310086-97 (06481)	EA	2									1 - 95	1A1MP6
X2 H A070	5305-988-7794	SCREW, CAP, SOCKET HEAD MS24671-30 (96906)	EA	16									1 - 96	1A1MP6H16
X2 H A071	6605	PLATE, TOP 310086-95 (06481)	EA	1									1-100	1A1MP7
X2 H A072	6605	STRAP 310086-93 (0648)	EA	2									1 - 93	1A1MP8
X2 H A073M	5305-059-3657	SCREW, MACHINE MS51958-61 (96906)	EA	8									1 - 94	1A1MP8H8
X2 H A704	6605	SUPPORT 310086-94 (06481)	EA	2									1 - 97	1A1MP9
P H A075M	5940-443-1188	TERMINAL BLOCK 7-542 (71785)	EA	1				*	*	*	4	1	1 - 45	1TB1
A076A	5305	SCREW, MACHINE MS51958-66 (96906)	EA	2									1 - 46	1TB1H2
X2 H A077	6605	SUBASSEMBLY, FILL STATION 310086-102 (06481)	EA	2									1 - 79	1A2
X2 H A078	6605	BODY 310086-92 (06481)	EA	1									1 - 85	1A2MP1
X2 H A079	5975	CLAMP 310086-91 (06481)	EA	1									1 - 84	1A2MP2
P O A080	5355-687-2934	KNOB, HAND CL4HK4 (99862)	EA	1				*	2	2	13	6	1 - 83	1A2MP3
X2 H A081	5306	ROD, THREADED 310086-90 (06481)	EA	1									1 - 81	1A2MP4
X2 H A082	5310-989-5945	NUT, PLAIN, HEXAGON MS35691-35 (96906)	EA	2									1 - 82	1A2MP4H2
X2 H A083	5310-933-8778	WASHER, LOCK MS35338-143 (96906)	EA	2									1 - 83	1A2MP4H2
X2 H A084	6605	SUBASSEMBLY, FILL STATION 310086-103 (06481)	EA	1									1 - 72	1A3
A084A		BOSS, FLUID, CONNECTION MS33649-4 (96906)	EA	2									1 - 77	1A3MP6
X2 H A085	4730-868-2180	NIPPLE, INLET 15-4 (16166)	EA	2									1 - 74	1A3MP1
A085A	4730	NIPPLE 4F50XSS (45681)	EA	1									1 - 76	1A3MP3
A086	5310-868-2093	NUT, INLET 92 (16166)	EA	2									1 - 73	1A3MP2
A086A		PLUG 4P50NSS (45681)	EA	1									1 - 75	1A3MP4
A086B		TUBE 310086-89 (06481)	EA	1									1 - 78	1A3MP5
X2 H A087M	6605	SUPPORT 310086-87 (06481)	EA	4									1-111	1MP38
X2 H A088	5310-894-3638	NUT, EXTENDED MASHER, HEXAGON NAS1291C3M (80205)	EA	16									1-112	1MP38H16

SECTION II. REPAIR PARTS FOR DIRECT SUPPORT, GENERAL SUPPORT, AND DEPOT MAINTENANCE  
(CONTINUED)

(1) SMR CODE	(2) FEDERAL STOCK NUMBER	(3) DESCRIPTION	(4) QTY INC IN UNIT PACK	(5) QTY INC IN UNIT	(6) 30-DAY DS MAINT ALLOWANCE			(7) 30-DAY GS MAINT ALLOWANCE			(8) 1 YR ALW PER 100 EQUIP	(9) DEPOT MAINT ALW PER 100 EQUIP	(10) ILLUSTR- ATIONS FIGURE & ITEM NO.	(11) REFERENCE DESIGNATION
					(a) 1-20	(b) 21-50	(c) 51-100	(a) 1-20	(b) 21-50	(c) 51-100	CNTGCTY	EQUIP		
A088A	5310	SCREW, MACHINE MS51958-63 (96906)	EA	8								1-114	1MP38H8	
X2 H A089M	5305-059-3662	SCREW, MACHINE MS51958-66 (969061)	EA	8								1-115	1MP38H8	
A089A	5310	WASHER, FLAT AN960C10L (88044)	EA	8								1-113	1MP38H8	
P H A090	5930-885-9677	SWITCH, PUSH 2D70 (91929)	EA	2				*	2	2	19	6	1-32	1SC
A091M	5930-885-9677	SWITCH, PUSH 2D70 (919291)	EA	REF									1-33	1SD
A092	5930-785-8546	SWITCH, PUSH 2D26 (91929F)	EA	2									1-30	1SA
A093	5930-785-8546	SWITCH, PUSH 2D26 (919291)	EA	REF									1-31	1SB
A094A	6645	SWITCH, TIMING T243A (120121)	EA	1									1-41	1S1
X2 H A095A	5305-068-8431	SCREW, MACHINE M551958-66 496906}	EA	2									1-42	1S1H2
X2 H A096	6605	TAG SET, IDENTIFICATION 310086-78 (064811)	EA	1									1-7	1MP33
A096A		TERMINAL R1885S (14726)	EA	14									1-43	1S1E1-14
A096B		TERMINAL R1891S (147261)	EA	18									1-44	1TB1E1-18
P H A097	4710	TUBE, TYGON /DX3-80DX24LG/ 844-3-1-4 (19793)	EA	1									1-53	1MP34
A098A	6605	VALVE 03212M4S (28968)	EA	1									1-68	1MP35
A098B	6605	VALVE 1255U35 t702921	EA	2									1-86	1MP42
P H A099	1650	VALVE, GATE 4-4-4FTHREAD 118702)	EA	1				*	*	2	8	3	1-60	1MP36
P H A100	4810-759-2735	VALVE, SOLENOID, THREE WAY A3DBD2127 (819781)	EA	1				*	*	2	8	3	1-62	1MP37
A101A	5310	WASHER, FLAT/16THKNIPLBRASS/ 1-1-21DX20DX1 (08588)	EA	1									1-67	1H2
A101A	5310	WASHER, FLAT /X1-16THKNIPLBRASS/ 11-16DX-1-200 (08588)	EA	2									1-59	1H3
A103	5310	WASHER, FLAT 310086-80 (06481)	EA	2									1-56	1H4

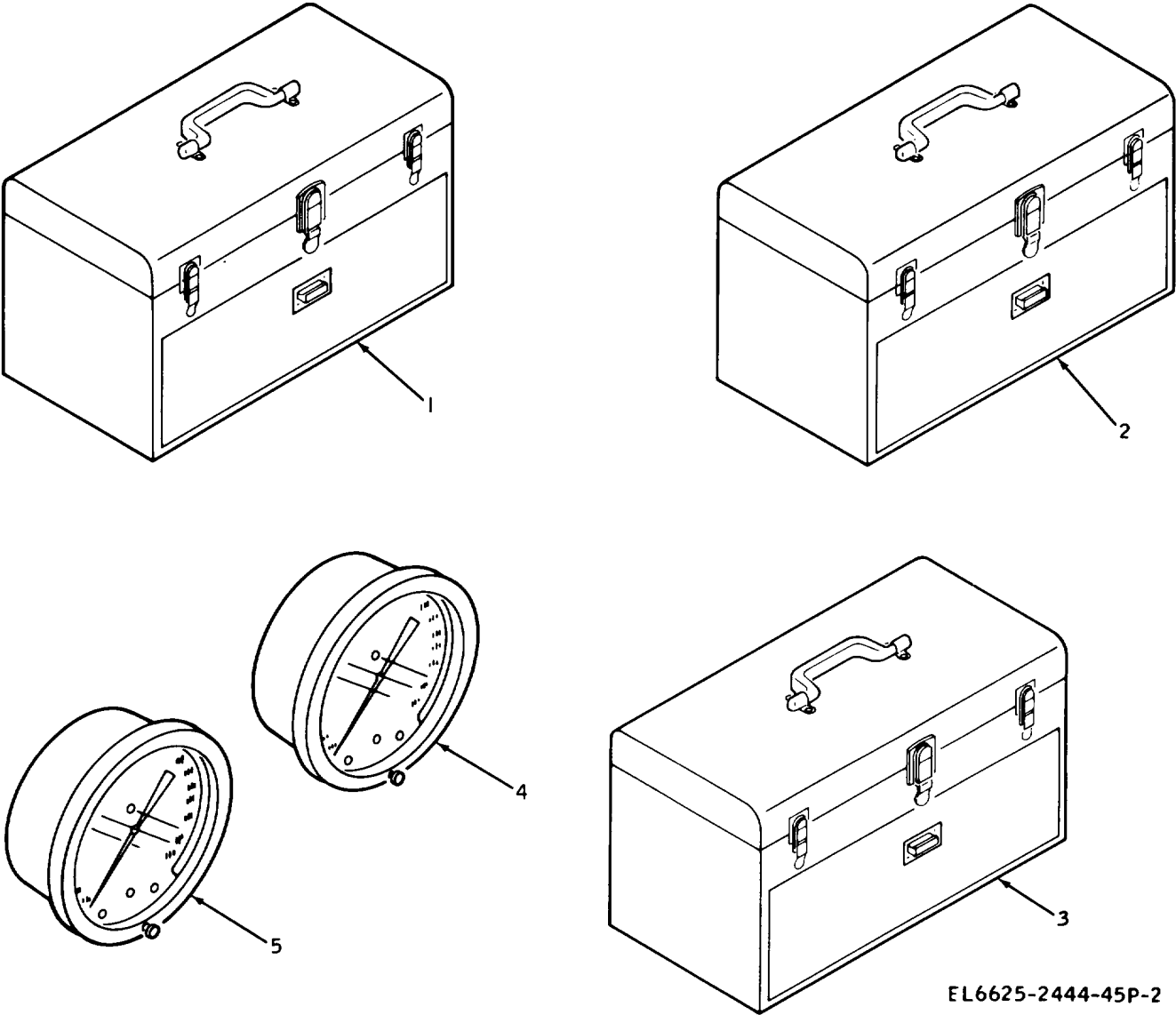


Figure 2. Special Tools, Test, and Support Equipment

3-3/(3-4 blank)

SECTION IV. INDEX FEDERAL STOCK NUMBER CROSS REFERENCE TO INDEX NUMBER (CONTINUED)

FEDERAL STOCK NUMBER	INDEX NO.	FEDERAL STOCK NUMBER	INDEX NO.	FEDERAL STOCK NUMBER	INDEX NO.
1560	A037	5905	A051A		
1650	A099	5905	A052A		
2640-672-8670	A019	5930-785-8546	A092		
4710	A097	5930-785-8546	A093		
4720	A027A	5930-885-9677	A090		
4730	A016B	5930-885-9677	A091M		
4730	A039A	5940-443-1188	A075M		
4730	A085A	5975	A002		
4730-132-9964	A013	5975	A079		
4730-200-0531	A020	5995	A006M		
4730-720-2007	A012M	6210-131-6480	A053A		
4730-768-0613	A015	6210-774-5948	A028		
4730-868-2180	A085	6210-774-5948	A029M		
4730-892-4587	A017	6210-774-5948	A030M		
4730-965-1232	A018M	6210-774-5948	A031M		
4810-759-2735	A100	6210-916-2711	A056		
5305	A004A	6210-940-8264	A055		
5305	A023A	6210-940-8265	A054		
5305	A040A	6605	A003		
5305	A042A	6605	A014		
5305	A044A	6605	A040		
5305	A044F	6605	A041		
5305	A059A	6605	A043		
5305	A076A	6605	A058		
5305-059-3657	A063	6605	A060		
5305-059-3657	A073M	6605	A061		
5305-059-3662	A005M	6605	A065		
5305-059-3662	A089M	6605	A067		
5305-068-8431	A095A	6605	A069		
5305-071-1316	A009	6605	A071		
5305-938-7826	A066	6605	A072		
5305-988-7616	A057	6605	A074		
5305-988-7794	A068	6605	A077		
5305-988-7794	A070	6605	A078		
5306	A081	6605	A084		
5310	A005A	6605	A087M		
5310	A042B	6605	A096		
5310	A044B	6605	A098A		
5310	A044E	6605	A098B		
5310	A044G	6605-522-3739	A001		
5310	A088A	6605-795-1674	A033		
5310	A089A	6605-795-1674	A034M		
5310	A101A	6605-795-1674	A035M		
5310	A102A	6605-795-1674	A036M		
5310	A103	6615	A048		
5310-868-2093	A086	6645	A094A		
5310-894-3638	A004M	6685	A022A		
5310-894-3638	A088	6685	A024M		
5310-933-8121	A010	6685	A025A		
5310-933-8778	A083	8120	A016A		
5310-989-0908	A008	9905	A044C		
5310-989-5945	A082	9905	A045		
5325-937-2015	A026				
5340	A007				
5340	A011A				
5340	A064A				
5340-812-5393	A064				
5340-827-6389	A062				
5355	A032				
5355-687-2934	A080				
5905	A049A				
5905	A050A				

SECTION IV. INDEX - REFERENCE NUMBER CROSS REFERENCE TO FIGURE AND ITEM NUMBER

REFERENCE NUMBER	MFG. CODE	FIGURE & ITEM NO.	REFERENCE NUMBER	MFG. CODE	FIGURE & ITEM NO.	REFERENCE NUMBER	MFG. CODE	FIGURE & ITEM NO.
AN26C1032-8	88044	1 - 12	30L1-4	71286	1 - 91			
AN26C1032-8	88044	1 - 14	30L2-4	71286	1 - 92			
AN26C1032-8	88044	1 - 24	310086	06481	1 - 1			
AN26C1032-8	88044	1 - 39	310086-101	06481	1 - 88			
AN26C1032-8	88044	1 -105	310086-102	06481	1 - 79			
AN960C10L	88044	1 - 25	310086-103	06481	1 - 72			
AN960C10L	88044	1 - 40	310086-78	06481	1 - 7			
AN960C10L	88044	1 -108	310086-79	06481	1 - 38			
AN960C10L	88044	1 -113	310086-80	06481	1 - 56			
A3DB2127	81978	1 - 62	310086-81	06481	1 -104			
B44-3-1-4	19793	1 - 53	310086-83	06481	1 -120			
CL4HK4	99862	1 - 80	310086-84	06481	1 - 23			
D3212M4S	28968	1 - 68	310086-85	06481	1 - 69			
MS16995-52	96906	1 - 63	310086-86	06481	1 - 8			
MS24671-30	96906	1 - 96	310086-87	06481	1 -111			
MS24671-30	96906	1 - 99	310086-88	06481	1 -106			
MS24671-32	96906	1 -102	310086-89	06481	1 - 78			
M533649-4	96906	1 - 70	310086-90	06481	1 - 81			
MS33649-4	96906	1 - 77	310086-91	06481	1 - 84			
MS35338-139	96906	1 -118	310086-92	06481	1 - 85			
MS35338-143	96906	1 - 83	310086-93	06481	1 - 93			
MS35691-3	96906	1 -117	310086-94	06481	1 - 97			
MS35691-35	96906	1 - 82	310086-95	06481	1 -100			
MS51021-9	96906	1 - 9	310086-96	06481	1 - 98			
MS51957-15	96906	1 - 6	310086-97	06481	1 - 95			
MS51957-80	96906	1 -119	310086-98	06481	1 -103			
MS51958-61	96906	1 - 90	310086-99	06481	1 -101			
MS51958-61	96906	1 - 94	327-06	17537	1 - 17			
MS51958-63	96906	1 -109	327-06	17537	1 - 18			
M551958-63	96906	1 -114	327-06	17537	1 - 20			
MS51958-66	96906	1 - 42	327-06	17537	1 - 22			
MS51958-66	96906	1 - 46	4-4-4FTHREAD	18702	1 - 60			
NS51958-66	96906	1 -110	4-4CBUSS	45681	1 - 58			
MS51958-66	96906	1 -115	4-4DBUSS	45681	1 - 57			
M1	39481	1 - 61	4-4FBUSS	45681	1 - 65			
NAS1291C04M	80205	1 - 4	4F50XSS	45681	1 - 76			
NAS1291C3M	80205	1 -107	4P50NSS	45681	1 - 75			
NAS1291C3M	80205	1 -112	420606-4-4-4-24	45681	1 - 71			
NAS620C4	80205	1 - 5	5328	53477	1 - 51			
RC42GF152J	81349	1 - 26	6BM55	93329	1 - 87			
RC42GF152J	81349	1 - 27	6363	53477	1 - 54			
RC42GF152J	81349	1 - 28	664277	06481	1 - 2			
RC42GF152J	81349	1 - 29	7-542	71785	1 - 45			
R1885S	14726	1 - 43	714-4-1-2DIA	61349	1 - 11			
R1891S	14726	1 - 44	714-4-1-201A	61349	2 - 5			
TK100G	80063	2 - 1	773	83330	1 - 89			
TK105G	80063	2 - 2	832IRIDITE	97620	1 - 47			
TK90G	80063	2 - 3	8385	53477	1 - 52			
T243A	12012	1 - 41	91121	83330	1 - 49			
VTS4003973PM	93329	1 - 66	92	16166	1 - 73			
1-1-2IDX20DX1	08588	1 - 67						
1-4CDSS	45681	1 - 55						
1-8FFSS	45681	1 - 64						
11-16IDX1-1-200	08588	1 - 59						
1255U35	70292	1 - 86						
14-3-16-3PLY7-16	18702	1 - 50						
1402-4-1-21N	61349	2 - 4						
15-4	16166	1 - 74						
17419SJ	70903	1 - 48						
1943-4-1-2DIA	61349	1 - 13						
2D26	91929	1 - 30						
2D26	91929	1 - 31						
2D70	91929	1 - 32						
2D70	91929	1 - 33						
2J10	91929	1 - 16						
2J11	91929	1 - 21						
2J12	91929	1 - 19						
2K3	91929	1 - 15						
2M2	91929	1 - 34						
2M2	91929	1 - 35						
2M2	91929	1 - 36						
2M2	91929	1 - 37						
2203A	83330	1 - 10						
247877-6	06481	1 - 3						
261	06004	1 -116						

**SECTION IV. INDEX - REFERENCE DESIGNATION CROSS REFERENCE TO INDEX NUMBER**

REFERENCE DESIGNATION	INDEX NO.	REFERENCE DESIGNATION	INDEX NO.	REFERENCE DESIGNATION	INDEX NO.
1	A001	1MP22H6	A042A		
1A1	A060	1MP22H6	A042B		
1A1MP1	A061	1MP23	A043		
1A1MP2	A062	1MP23H8	A044A		
1A1MP2H3	A063	1MP23H8	A048		
1A1MP3	A064	1MP24	A045		
1A1MP4	A065	1MP27	A048		
1A1MP4H8	A066	1MP28	A053		
1A1MP5	A067	1MP29	A054		
1A1MP5H16	A068	1MP30	A055		
1A1MP6	A069	1MP31	A056		
1A1MP6H16	A070	1MP32	A058		
1A1MP7	A071	1MP32H1	A059A		
1A1MP8	A072	1MP33	A096		
1A1MP8H8	A073M	1MP34	A097		
1A1MP9	A074	1MP35	A098A		
1A1MP10	A064A	1MP36	A099		
1A2	A077	1MP37	A100		
1A2MPL	A078	1MP38	A087M		
1A2MP2	A079	1MP38H8	A088A		
1A2HP3	A080	1MP38H8	A089A		
1A2MP4	A081	1MP38H8	A089M		
1A2MP4H2	A082	1MLP38H16	A088		
1A2MP4H2	A083	1MP39	A044C		
1A3	A084	1MP39H4	A044E		
1A3MP1	A085	1MP39H4	A044F		
1A3MP2	A086	1MP39H8	A044G		
1A3MP3	A085A	1MP40	A002A		
1A3MP4	A086A	1MP41	A016B		
1A3MP5	A086B	1MP42	A098B		
1A3MP6	A084A	1R1	A049A		
1DSA	A028	1R2	A050A		
1DSB	A029M	1R3	A051A		
1DSC	A030M	1R4	A052A		
1DSD	A031M	1SA	A092		
1DS1	A033	1SB	A093		
1DS2	A034M	1SC	A090		
1DS3	A035M	1SD	A091M		
1DS4	A036M	1S1	A094A		
1G1	A022A	1S1E1-14	A096A		
1G1H3	A023A	1S1H2	A095A		
1G2	A024M	1TB1	A075M		
1G2H3	A025A	1TB1E1-18	A096B		
1H1	A057	1TB1H2	A076A		
1H2	A101A	1W1	A006M		
1H3	A102A				
1H4	A103				
1MP1	A002				
1MP2	A003				
1MP2H4	A004A				
1MP2H4	A005A				
1MP2H4	A005M				
1MP2H8	A004M				
1MP3	A007				
1MP3H16	A008				
1MP3H16	A009				
1MP3H16	A010				
1MP4	A011A				
1MP5	A013				
1MP6	A012M				
1MP7	A014				
1MP8	A015				
1MP9	A016A				
1MP10	A017				
1MP11	A018M				
1MP12	A019				
1MP13	A020				
1MP15	A026				
1MP16	A027A				
1MP17	A032				
1MPL8	A037				
1MP20	A039A				
1MP21	A040				
1MP21H8	A040A				
1MP22	A041				



**SECTION IV. INDEX - FEDERAL STOCK NUMBER CROSS-REFERENCE TO FIGURE AND ITEM NUMBER**

<b>STOCK NUMBER</b>	<b>FIGURE &amp; ITEM NO.</b>	<b>STOCK NUMBER</b>	<b>FIGURE &amp; ITEM NO.</b>	<b>STOCK NUMBER</b>	<b>FIGURE &amp; ITEM NO.</b>
1560	1 - 61	5340-827-6389	1 - 89		
1650	1 - 60	5355	1 - 10		
2640-672-8670	1 - 51	5355-687-2934	1 - 80		
4710	1 - 53	5905	1 - 26		
4720	1 - 71	5905	1 - 27		
4730	1 - 55	5905	1 - 28		
4730	1 - 64	5905	1 - 29		
4730	1 - 76	5930-785-8566	1 - 30		
4730-132-9964	1 - 69	5930-785-8546	1 - 31		
4730-200-0531	1 - 54	5930-885-9677	1 - 32		
4730-720-2007	1 - 65	5930-885-9677	1 - 33		
4730-768-0613	1 - 52	5940-443-1188	1 - 45		
4730-868-2180	1 - 74	5975	1 - 47		
4730-892-4587	1 - 58	5975	1 - 84		
4730-965-1232	1 - 57	5995	1 - 48		
4810-759-2735	1 - 62	6210-131-6480	1 - 15		
5305	1 - 6	6210-774-5948	1 - 34		
5305	1 - 9	6210-774-5948	1 - 35		
5305	1 - 14	6210-774-5948	1 - 36		
5305	1 - 24	6210-774-5948	1 - 37		
5305	1 - 39	6210-916-2711	1 - 19		
5305	1 - 46	6210-940-8264	1 - 21		
5305	1 -105	6210-940-8265	1 - 16		
5305	1 -109	6605	1 - 7		
5305-059-3657	1 - 90	6605	1 - 8		
5305-059-3657	1 - 94	6605	1 - 23		
5305-059-3662	1 -110	6605	1 - 38		
5305-059-3662	1 -115	6605	1 - 68		
5305-068-8431	1 - 42	6605	1 - 72		
5305-071-1316	1 -119	6605	1 - 79		
5305-938-7826	1 -102	6605	1 - 85		
5305-988-7616	1 - 63	6605	1 - 86		
5305-988-7794	1 - 96	6605	1 - 88		
5305-988-7794	1 - 99	6605	1 - 93		
5306	1 - 81	6605	1 - 95		
5310	1 - 4	6605	1 - 97		
5310	1 - 5	6605	1 - 98		
5310	1 - 25	6605	1 -100		
5310	1 - 40	6605	1 -101		
5310	1 - 56	6605	1 -103		
5310	1 - 59	6605	1 -104		
5310	1 - 67	6605	1 -106		
5310	1 -108	6605	1 -111		
5310	1 -113	6605	1 -120		
5310	1 -114	6605-522-3739	1 - 1		
5310-868-2093	1 - 73	6605-795-1674	1 - 17		
5310-894-363e	1 -107	6605-795-1674	1 - 18		
53L0-894-3638	1 -112	6605-795-1674	1 - 20		
5310-933-8121	1 -118	6605-795-1674	1 - 22		
5310-933-8778	1 - 83	6615	1 - 66		
5310-989-0908	1 -117	6645	1 - 41		
5310-989-5945	1 - 82	6685	1 - 11		
5325-937-2015	1 - 49	6685	1 - 12		
5340	1 - 50	6685	1 - 13		
5340	1 - 92	8120	1 - 87		
5340	1 -116	9905	1 - 2		
5340-812-5393	1 - 91	9905	1 - 3		

SECTION IV. INDEX FIGURE AND ITEM NUMBER CROSS REFERENCE TO INDEX NUMBER

FIG. NO.	ITEM NO. OR REFERENCE DESIGNATION	INDEX NO.	FIG. NO.	ITEM NO. OR REFERENCE DESIGNATION	INDEX NO.
1	1	A001	1	74	A085
1	2	A045	1	75	A086A
1	3	A044C	1	76	A085A
1	4	A044E	1	77	A084A
1	5	A044G	1	78	A086B
1	6	A044F	1	79	A077
1	7	A096	1	80	A080
1	8	A0058	1	81	A081
1	9	A059A	1	82	A082
1	10	A032	1	83	A083
1	11	A024#	1	84	A079
1	12	A025A	1	85	A078
1	13	A022A	1	86	A098B
1	14	A023A	1	87	A016A
1	15	A053	1	88	A060
1	16	A054	1	89	A062
1	17	A033	1	90	A063
1	18	A034M	1	91	A064
1	19	A056	1	92	A064A
1	20	A035M	1	93	A072
1	21	A055	1	94	A073M
1	22	A036M	1	95	A069
1	23	A043	1	96	A070
1	24	A044A	1	97	A074
1	25	A0448	1	98	A067
1	26	A049A	1	99	A068
1	27	A050A	1	100	A071
1	28	A051A	1	101	A065
1	29	A052A	1	102	A066
1	30	A092	1	103	A061
1	31	A093	1	104	A040
1	32	A090	1	105	A040A
1	33	A091M	1	106	A003
1	34	A028	1	107	A004M
1	35	A029M	1	108	A005A
1	36	A030M	1	109	A004A
1	37	A031M	1	110	A005M
1	38	A041	1	111	A087M
1	39	A042A	1	112	A088
1	40	A042B	1	113	A089A
1	41	A094A	1	114	A088A
1	42	A095A	1	115	A089M
1	43	A096A	1	116	A007
1	44	A096B	1	117	A008
1	45	A075M	1	118	A010
1	46	A076A	1	119	A009
1	47	A002	1	120	A014
1	48	A006M	2	1	A104
1	49	A026	2	2	A105
1	50	A011A	2	3	A106
1	51	A019	2	4	A107
1	52	A015	2	5	A108M
1	53	A097			
1	54	A020			
1	55	A016B			
1	56	A103			
1	57	A018M			
1	58	A017			
1	59	A102A			
1	60	A099			
1	61	A037			
1	62	A100			
1	63	A057			
1	64	A039A			
1	65	A102M			
1	66	A048			
1	67	A101			
1	68	A098A			
1	69	A013			
1	70	A002A			
1	71	A027A			
1	72	A084			
1	73	A086			

By the Order of the Secretary of the Army:

Official:

VERNE L. BOWERS,  
*Major General, United States Army,  
The Adjutant General.*

W. C. WESTMORELAND,  
*General, United States Army,  
Chief of Staff.*

Distribution:

To be distributed in accordance with DA Form 12-31, Direct/General Support requirements for the OV-1D and U-21 aircrafts.

☆ U.S. GOVERNMENT PRINTING OFFICE : 1985 O - 461-421 (21165)

**SECTION III. SPECIAL TOOLS, TEST & SUPPORT EQUIPMENT FOR DIRECT SUPPORT, GENERAL SUPPORT & DEPOT MAINTENANCE**

(1) SMR CODE	(2) FEDERAL STOCK NUMBER	(3) DESCRIPTION	(4) UNIT OF MEAS.	(5) QTY INC IN UNIT	(6) 30-DAY DS MAINT ALLOWANCE			(7) 30-DAY GS MAINT ALLOWANCE			(8) 1 YR ALW PER 100 EQUIP CNTGCV	(9) DEPOT MAINT ALW PER 100 EQUIP	(10) ILLUSTR- ATIONS FIGURE & ITEM NO.	(11) REFERENCE DESIGNATION
					(a) 1-20	(b) 21-50	(c) 51-100	(a) 1-20	(b) 21-50	(c) 51-100				
INDEX NO		REFERENCE NUMBER & MFR. CODE	USABLE ON CODE											
A104		TOOL KIT TK100G (80063)	EA										2-1	
A105		TOOL KIT TK105G (80063)	EA										2-2	
A106		TOOL KIT TK90G (80063)	EA										2-3	
A107		TEST GAGE /0-3000PSI/ 1402-4-1-2IN (61349)	EA										2-4	
A108M		TEST GAGE /0-5PSI/ 714-4-1-2DIA (61349)	EA										2-5	

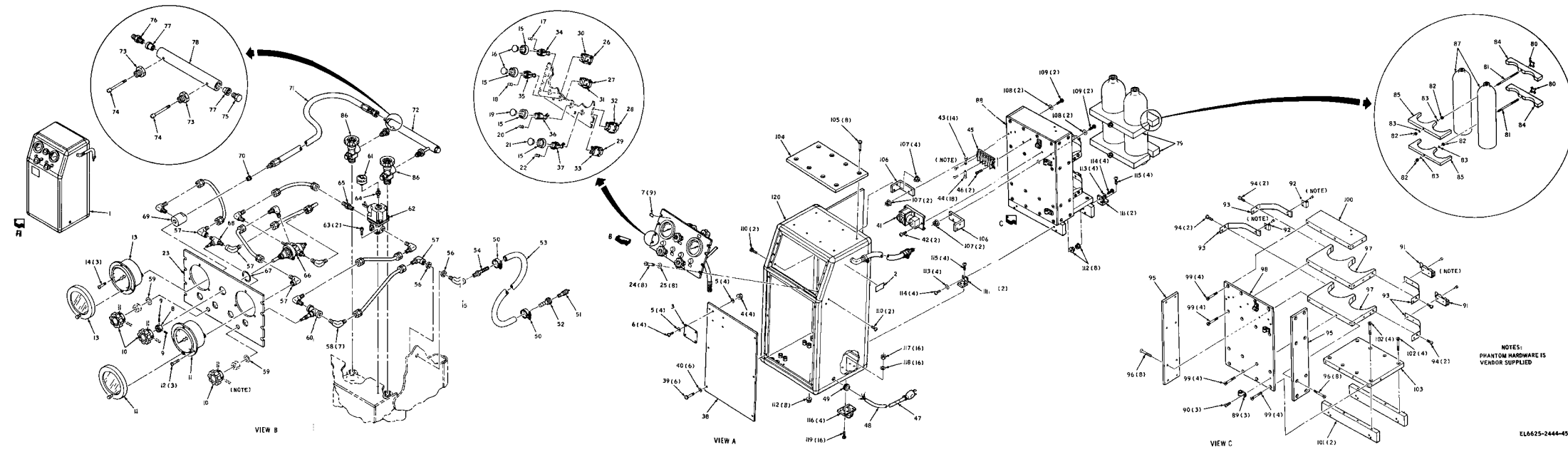


Figure 1. Purge and Fill Unit, Gyro Stabilized Platform MX-8474/ASN-86

RECOMMENDED CHANGES TO EQUIPMENT TECHNICAL PUBLICATIONS

**SOMETHING WRONG WITH THIS PUBLICATION?**



THEN... JOT DOWN THE DOPE ABOUT IT ON THIS FORM, CAREFULLY TEAR IT OUT, FOLD IT AND DROP IT IN THE MAIL!

FROM: (PRINT YOUR UNIT'S COMPLETE ADDRESS)

DATE SENT

PUBLICATION NUMBER

PUBLICATION DATE

PUBLICATION TITLE

BE EXACT... PIN-POINT WHERE IT IS

PAGE NO.	PARA-GRAPH	FIGURE NO.	TABLE NO.
----------	------------	------------	-----------

IN THIS SPACE TELL WHAT IS WRONG AND WHAT SHOULD BE DONE ABOUT IT:

TEAR ALONG PERFORATED LINE

PRINTED NAME, GRADE OR TITLE, AND TELEPHONE NUMBER

SIGN HERE:

DA FORM 2028-2  
1 JUL 79

PREVIOUS EDITIONS  
• ARE OBSOLETE.

P.S.—IF YOUR OUTFIT WANTS TO KNOW ABOUT YOUR RECOMMENDATION MAKE A CARBON COPY OF THIS AND GIVE IT TO YOUR HEADQUARTERS.

**PIN: 999999-000**